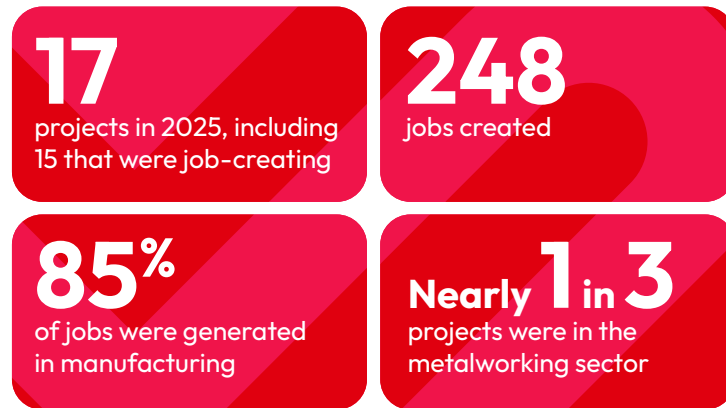


# Luxembourg

## Annual Report 2025

There were 17 investment projects recorded in France from Luxembourg businesses in 2025, including 15 that created 248 jobs.<sup>1</sup> Manufacturing activities accounted for 71% of projects and 85% of forecast jobs.



### Number of projects and jobs by investment type

Investment type	Projects	Jobs
Creation	6	51
Expansion	9	197
Safeguarding and partnership	2	-

### They chose France in 2025

**Pinzler Lux S.A.:** Pinzler is developing a major project in the Grand Est region with the construction of a site costing approximately €20 million, located alongside the A31 motorway between Nancy and Metz. The complex, with a total surface area of 55,000 sq. m., will include a 6,000 sq. m. multi-temperature warehouse (frozen, chilled and ambient temperature) with HQE (High Environmental Quality) certification for food and pharmaceutical products. It will also incorporate two freezing and thawing tunnels, as well as an order preparation area. The site will also feature a secure 96-space truck parking area equipped with photovoltaic canopies, compliant with EU Platinum and TAPA standards, and co-financed by the European Union. A truck wash station and 26 rooms dedicated to truck drivers will complete the infrastructure. The project is scheduled to become operational at the end of 2026, eventually creating around twenty jobs.

### Top 3 business activities

Manufacturing	12 projects
Logistics	3 projects
R&D, engineering	1 project

### Top 3 host regions

Grand Est	7 projects
Bourgogne-Franche-Comté	3 projects
Ile de France (Paris region)	2 projects

### Luxembourg investments in France

According to its definition,<sup>2</sup> INSEE recorded 1,075 businesses in France originating from Luxembourg, employing 103,201 full-time equivalents.

In 2025, 17 new Luxembourg investment projects were recorded in France, of which 15 were expected to create 248 jobs. The majority of these projects were expansions of existing sites, demonstrating the confidence of Luxembourg investors in their French establishments.

The majority of projects (71%) and jobs (85%) were related to production/manufacturing activities, followed by logistics (18%), R&D/engineering/design and decision-making centers (6% each).

Sector-wise, projects from Luxembourg were mainly intended for the metalworking sector (29%). Luxembourg was the leading investor in this sector, accounting for 14% of all projects recorded in 2025 and 8% of all forecast jobs. The aerospace, naval and railway equipment sector, meanwhile, accounted for the most forecast jobs from Luxembourg (29%).

The country's geographical proximity to the Grand Est region made the latter the primary destination for projects (41%), followed by Bourgogne-Franche-Comté (18%), Ile de France (Paris region) and Hauts de France (12% each).

<sup>2</sup> Source: French National Institute for Statistics and Economic Studies (INSEE), 2025; stock of foreign businesses in France, according to the INSEE definition of December 31, 2022, excluding confidential data.

### Top 5 business sectors by projects

Business sector	Number		Share	
	Projects	Jobs	Projects	Jobs
Metalworking	5	66	29%	27%
Transport, storage	3	24	18%	10%
Aerospace, naval and railway equipment	2	73	12%	29%
Pharmaceuticals and biotechnologies	2	45	12%	18%
Building, construction	2	23	12%	9%

### Breakdown of projects by business activity

Business activity	Number		Share	
	Projects	Jobs	Projects	Jobs
Decision-making centers	1	4	6%	2%
Logistics	3	24	18%	10%
Production/Manufacturing	12	212	71%	85%
R&D, engineering, design	1	8	6%	3%
<b>Total</b>	<b>17</b>	<b>248</b>	<b>100%</b>	<b>100%</b>

### Change in projects and jobs since 2021 (excluding retail outlets)

